

Great Print-Ready PDFs from Photoshop



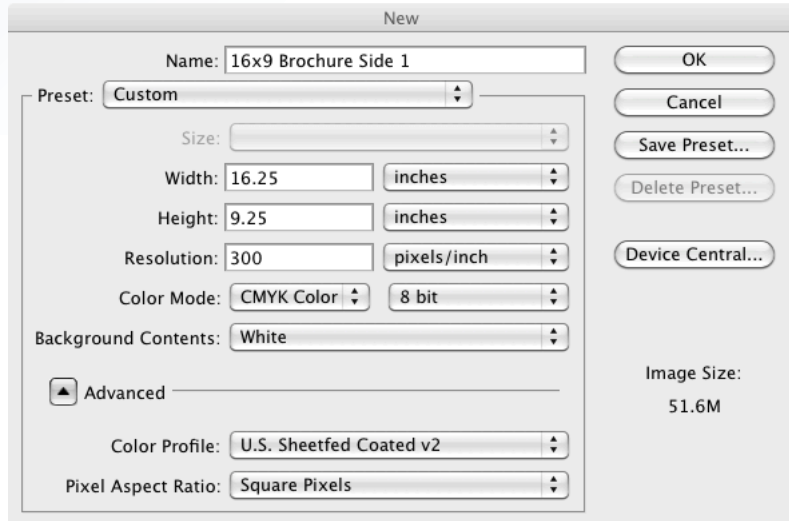
Prepare. Create new file including bleed areas; check color mode ~ Step 1

Start out right by creating all of your print-destined Photoshop files with bleed, even if the final piece will not bleed. Get in the habit and you'll never regret it. Image size should be the final trim size of your document plus 1/4-inch height and width. (See our file "Folding Calculator" for assistance in planning sizes.)

Here's an example of a setting up a new, 16 x 9, four-panel, double-parallel fold brochure file with bleed:

File > New

The "New" dialog box appears. You may have to click "More Options" to see the Color Profile setting area. Type in the width and height of the final, trimmed size of your document PLUS **0.25 inches**. The Resolution should ideally be 300 pixels/inch, and no lower than 150 pixels per inch. The Color Mode should be CMYK Color.* The Color Profile should be U.S. Sheetfed Coated v2 for items that will print on coated paper, or U.S. Sheetfed Uncoated v2 for items that will print on uncoated paper. Click "OK". Obviously, the width and height can be changed based on the real size of your document, but the bleed should ALWAYS be added to the trim size then THOSE dimensions entered for your file from the start.

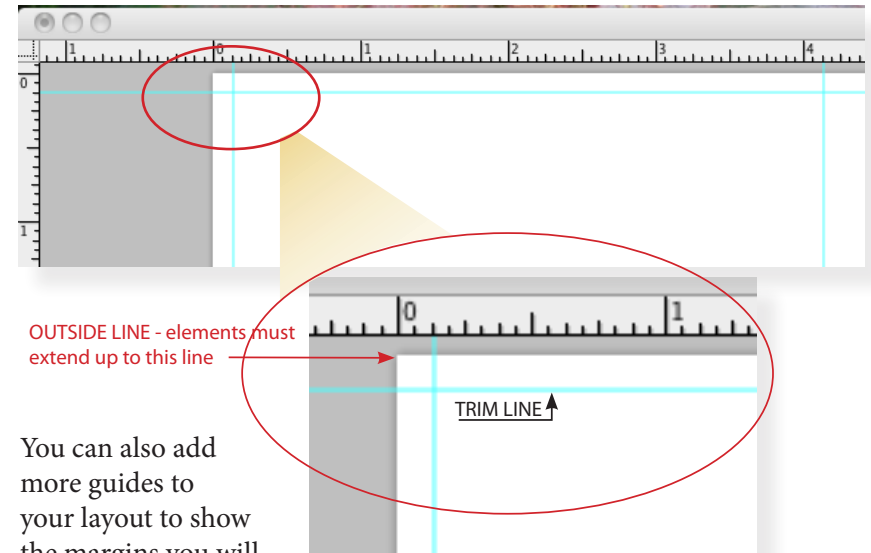


* Color Mode is should be CMYK even if you use spot Pantone colors in your file, but then the file should be saved as a Photoshop file (.PSD), not PDF.

View > Rulers

View > Show > Guides

Bring in guides from the left and top rulers to 1/8th-inch from the edges. This is where your document will be trimmed. Any color/element that touches this line should extend past it to the edges of the file. This is the bleed area that is necessary, but will be trimmed off after printing. Account for the 1/8th-inch bleed for other guides, such as guides to show a fold, when planning your design file. In this example, the next guide is at 4-1/8th for a 4-inch panel design.*



You can also add more guides to your layout to show the margins you will allow from the trim to the "live" area of your document.

*** Download our "folding calculator" to determine correct panel sizes for various folding schemes.**

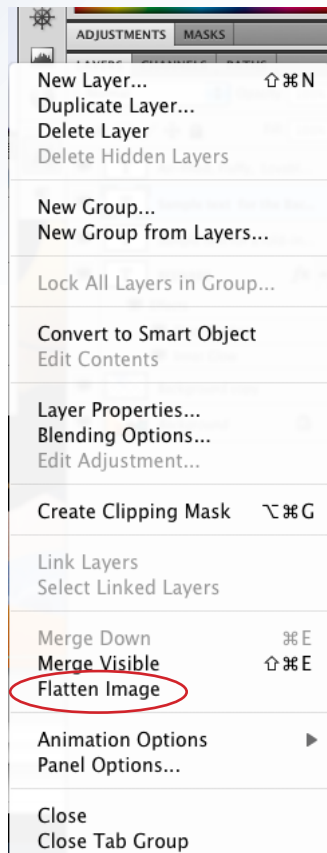
Great Print-Ready PDFs from Photoshop

Flatten File ~ Step 2

Almost ready!

Flatten Layers.

Depending on your design, you may have several layers in your file. Lots of layers result in large Photoshop files, even when saved as PDFs. To save space, you may wish to flatten your file before making the final PDF, but always save an unflattened version in order to make changes if necessary.



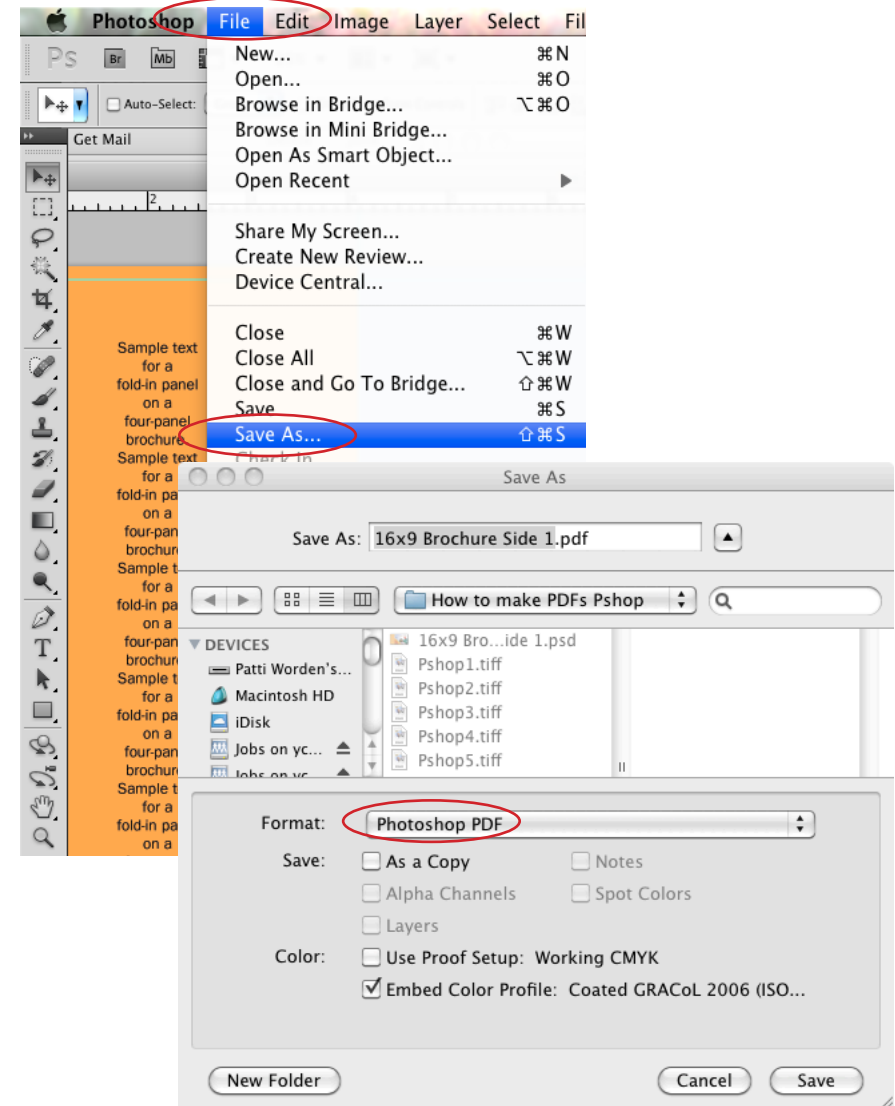
To flatten, in the “Layers” palette, chose “Flatten Image”. If you have text layers, these will be rasterized (changed from vector shapes to pixels). If you wish to keep the text layers as vector text, merge only the non-text layers to reduce the number of layers (reducing the file size), or none at all. Saving the PDF will embed the fonts in the file. (Some fonts cannot be embedded due to licensing restrictions.)

Save As PDF ~ Step 3

Save your file as a PDF.

File > Save As ...

Photoshop PDF

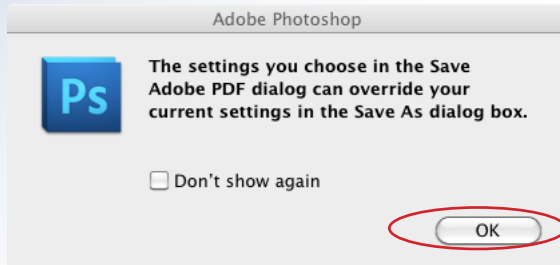


Great Print-Ready PDFs from Photoshop

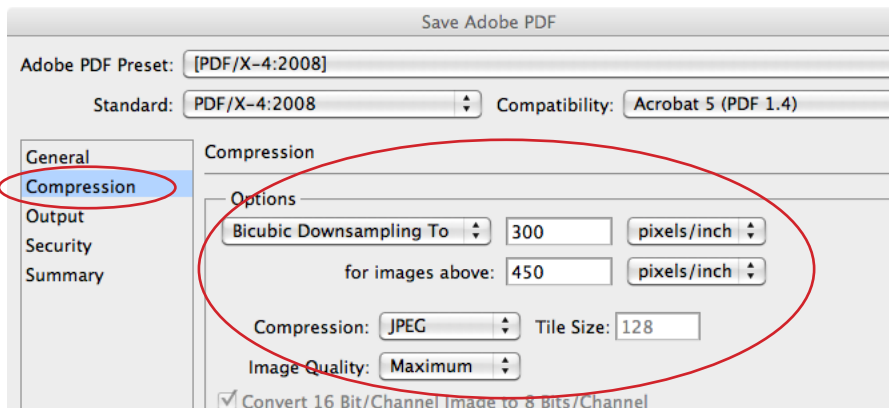
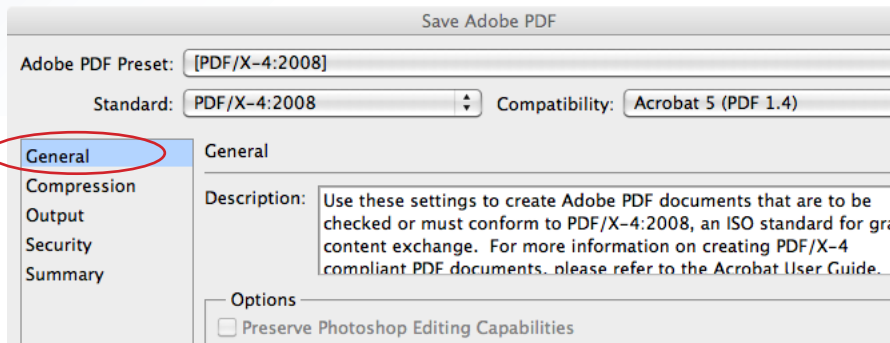
Save as PDF (continued) ~ Step 3

Choose Correct Settings for a Great PDF.

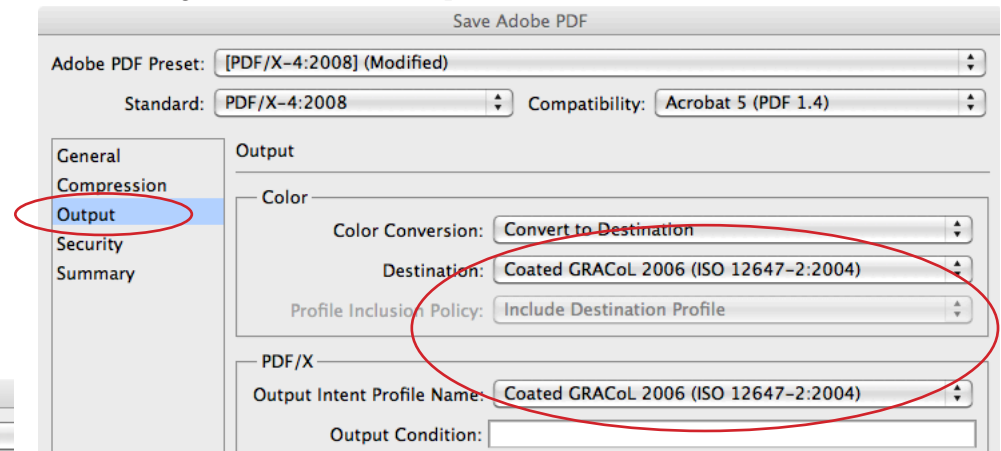
Choose “OK” for this dialog box. You will choose a PDF setting next that will ensure the PDF will be optimized for printing.



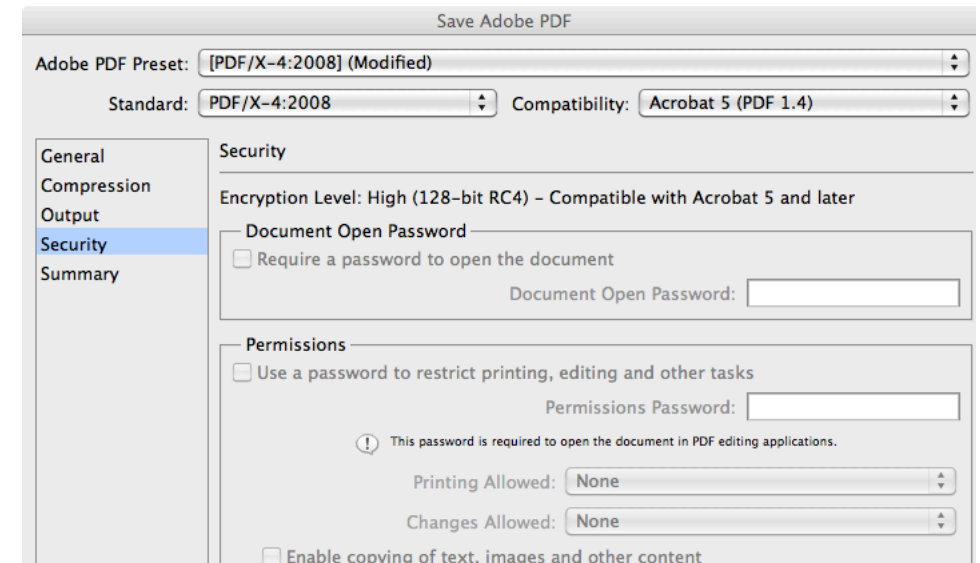
Adobe PDF Preset: PDF/X-4: 2008



The “Destination” and “Output Intent Profile Name” will match the active settings on YOUR Photoshop file.



Set Security however you wish in this window, just be sure that opening and printing is allowed without a password.

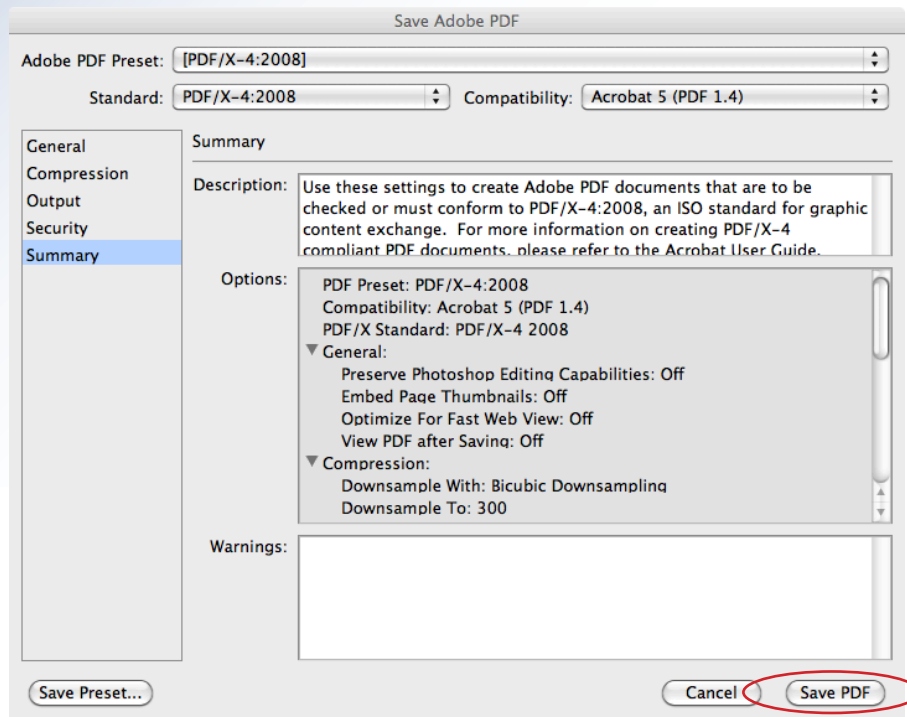


Great Print-Ready PDFs from Photoshop

Saving as PDF - Finishing Up!

Save your file.

Look over the Summary and save your PDF.



As a final check, ALWAYS open and view your PDF before sending it for printing.

Remember:

✓ BLEEDS.

Make your new file with bleed. Be sure all items that touch the trim edges extend to the bleed lines.

✓ VIEW.

Look at your PDF before sending. Admire the results!

Send your final PDF to Advanced Color Graphics this easy way:

www.advancedcolorgraphics.com

Click on "upload file" and follow the easy instructions!

Questions? Just call us: (814)-235-1200 or Toll-Free - (877) 552-1200